



Chartered Surveyors &
Commercial Property Consultants

STORAGE, WORKSHOP & WAREHOUSE UNITS TO LET

**ELCOT PARK & MEWS, ELCOT LANE
MARLBOROUGH, WILTSHIRE, SN8 2BG**

**RANGE OF UNITS FROM
759 SQ. FT.**



Bartholomew House, 38 London Road, Newbury, Berkshire RG14 1JX

www.quintons.co.uk

This information and the descriptions and measurements herein do not form part of any contract and whilst every effort has been made to ensure accuracy, this cannot be guaranteed.

SITUATION

Elcot Park and Mews lie in a private setting just off the A4 in Marlborough. Good access is available to the North, East, South & West via the A4, A338, A303 and M4.

DESCRIPTION

A flexible selection of Office, Workshop and Warehouse Units.

Elcot Park & Mews comprise two separate buildings of brick elevations under pitched roofs.

The flexible nature means that almost any size and environment can be created.

Parking spaces are allocated on site.

ACCOMMODATION

	From
Range of units from	759 sq. ft

RATING ASSESSMENT

Rateable Value tba
Rates Payable tba
Most of the properties have no rates to pay.

PROPOSAL

The properties are available on flexible agreements from 1 month upwards.

The quoting rents for the units depend on fit out, length of lease etc. – but for the smallest space is £520 per month.

VAT is applicable.

LEGAL COSTS

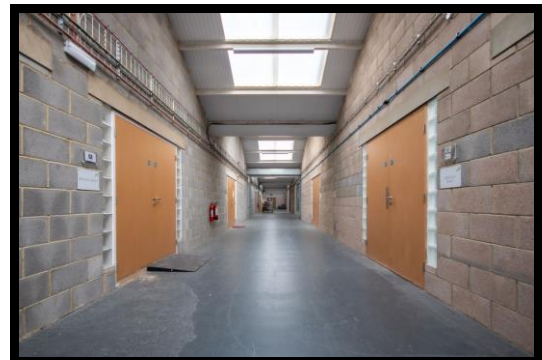
Each party is to bear their own costs.

ENERGY PERFORMANCE CERTIFICATE

The property has an EPC rating of D - 97

VIEWING

Contact Shane Prater, Direct Tel: 01635 262510, Email: shane@quintons.co.uk
August 2022



Bartholomew House, 38 London Road, Newbury, Berkshire RG14 1JX

www.quintons.co.uk

This information and the descriptions and measurements herein do not form part of any contract and whilst every effort has been made to ensure accuracy, this cannot be guaranteed.